

SECTION 11 - DRAWING AND MATHEMATICS

Index

Drawing	Page 194
Enumeration	Page 194
Logics	Page 195
Fractions and percentages	Page 195
Mathematics on magnetic blackboard	Page 197

 Teaching guide in digital format

 Minimum invoiced order: € 130,00 + VAT



Magnetic board with stand

1329

With white surface in order to draw diagrams and write formula with MDT drawing pens. It can hang from the wall or be table-mounted in vertical position. Dimensions: 60 x 90 cm.



1329

Magnetic board set

7136

Components:
1 plastic circle Ø 50 cm
1 plastic circle Ø 40 cm
3 erasable drawing pens (red, black and blue)



7136

White magnetic boards with MDT drawing pens, to be hung on walls

Dimensions: 90 x 120 cm
Dimensions: 100 x 150 cm

BLV/256
BLV/257

Abacus

ID054

Made of plastic material.
Dimensions: 190x170 mm.

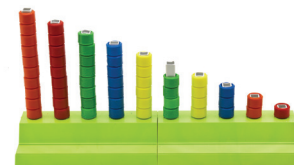


ID054

Scalar abacus

7082

Made of solid plastic.
Composed of:
- 2 numbered bases with 5 holes each.
- 10 scalar rods.
- 60 little cylinders.
It enables the comprehension of the concept of variable quantity.



7082

Multibasis abacus

7081

Made of solid plastic.
It is composed of:
- Bases with 5 holes.
- 5 four-basis rods.
- 5 six-basis rod.
- 5 ten-basis rod.
- 45 little cylinders.

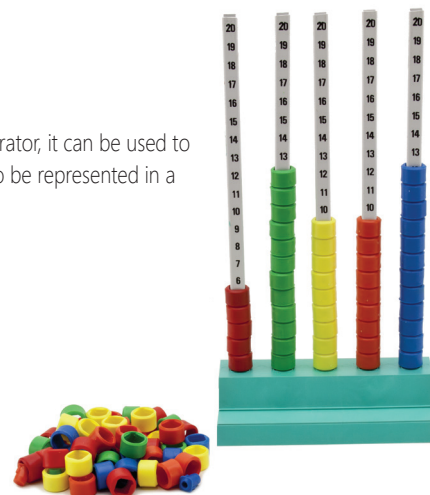


7081

Column numerator

7083

Made of solid plastic.
Composed of:
- 1 numbered basis.
- 5 numbered rods.
- 100 little cylinders.
In couple with another numerator, it can be used to visualize the data collected to be represented in a graph.



7083

LOGICAL PATTERNS

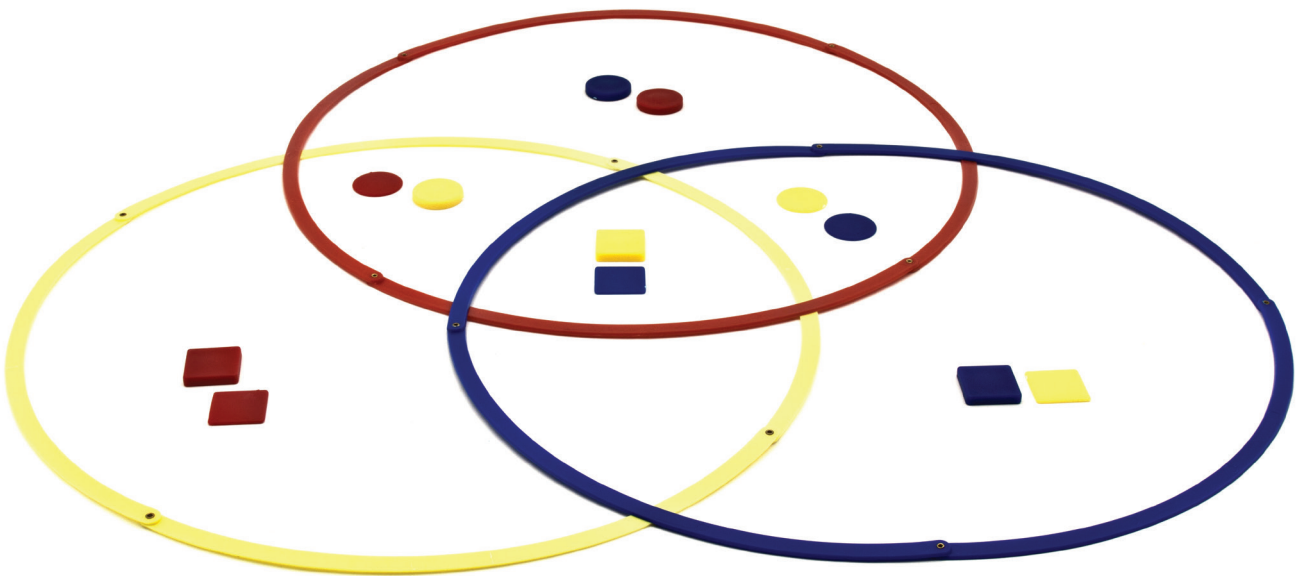
They have different thickness, different dimensions and are of three different colors. They are particularly indicated for performing operations on the set theory and for learning the basic concepts of geometry.

Grouping circles

7086

This item is composed of three flexible circles of different colors enabling the performance of logic activities through the use of items code ID057 or ID058.

Made of plastic, shockproof material; circles diameter: 50 cm.



7086

Fractions and percentages - **DRAWING AND MATHEMATICS****Fraction, decimal and percent tower**

7090

This teaching aid is composed of a plastic base with 6 holes where different pieces can be housed and piled up. These pieces represent the unit's fractions from $1/2$ to $1/12$, decimals and percentages.

Components:

51 fraction cubes

51 decimal cubes

51 percent cubes

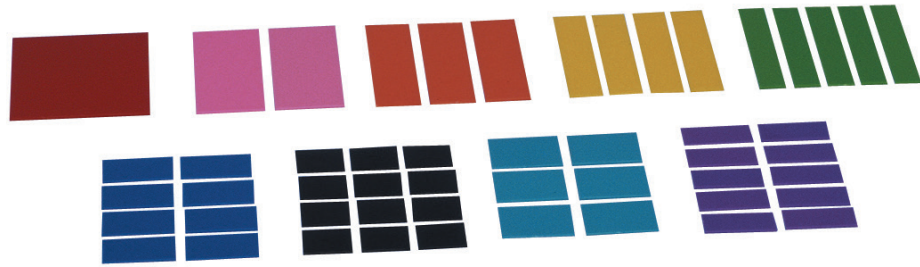


7090

Square's fractions

7088

Made of shockproof, brightly colored plastic, this teaching aid is composed of 51 pieces: the first one is a square whose side measures 10 cm, and the other pieces are fractions, from $1/2$ to $1/12$. All pieces are stored in a transparent, plastic case with lid.



7088

Circle's fractions

7089

Made of shockproof, brightly colored plastic, this teaching aid is composed of 51 pieces: the first one is a circle whose diameter measures 10 cm, and the other pieces are fractions, from $1/2$ to $1/12$. All pieces are stored in a transparent, plastic case with lid.



7089

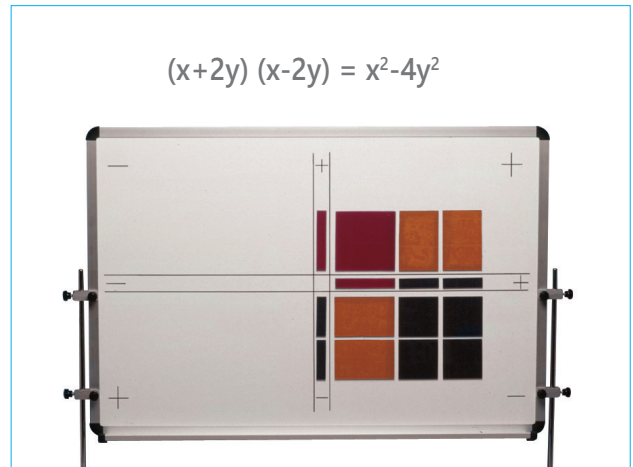
Algebraic models for magnetic board

7134

24 pcs.

Topics

- Operations with relative numbers
- Geometric significance of monomials and operations with monomials
- Operations with polynomials
- The equations of I for one unknown factor
- The disequations of I for one unknown factor

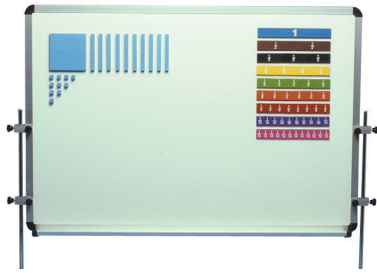


Hereafter there are some mathematic teaching aids, whose components are magnetic, in order to be used by the teacher on a magnetic whiteboard ;it can be a mural one, or with stand (cod. 1329), and the dimensions are at least 60x90 cm.

Metric decimal system for magnetic board

7095

Composed of: 1 dm² - 10 dm - 10 cm.

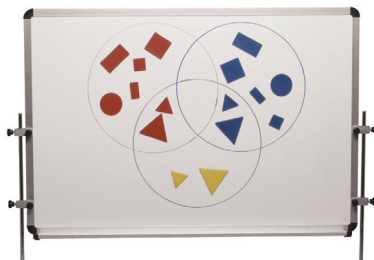


7095

Logic figures for magnetic board

7130

Pack of 24 pcs.



7130

Circle fraction for magnetic board

7133

Made of magnetic, brightly colored plastic , this teaching aid is composed of 51 pieces: the first one is a circle whose diameter measures 10 cm, and the other pieces are fractions, from 1/2 to 1/12. All pieces are stored in a transparent, plastic case with lid.



7133